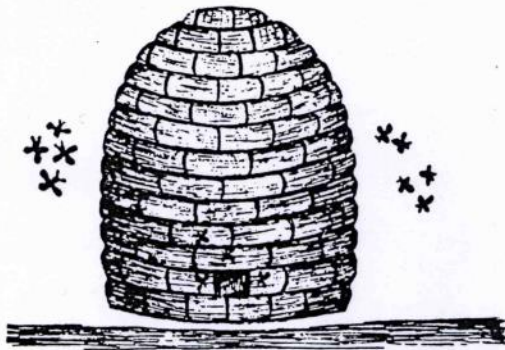


The Housing Cooperative Movement in Berlin



Housing Cooperatives

Renaissance of group-self-help organizations



Möge der genossenschaftliche Geist, der uns lehrt, daß wir Menschen Brüder sind, ständig wachsen in uns und in immer weitere Kreise dringen!

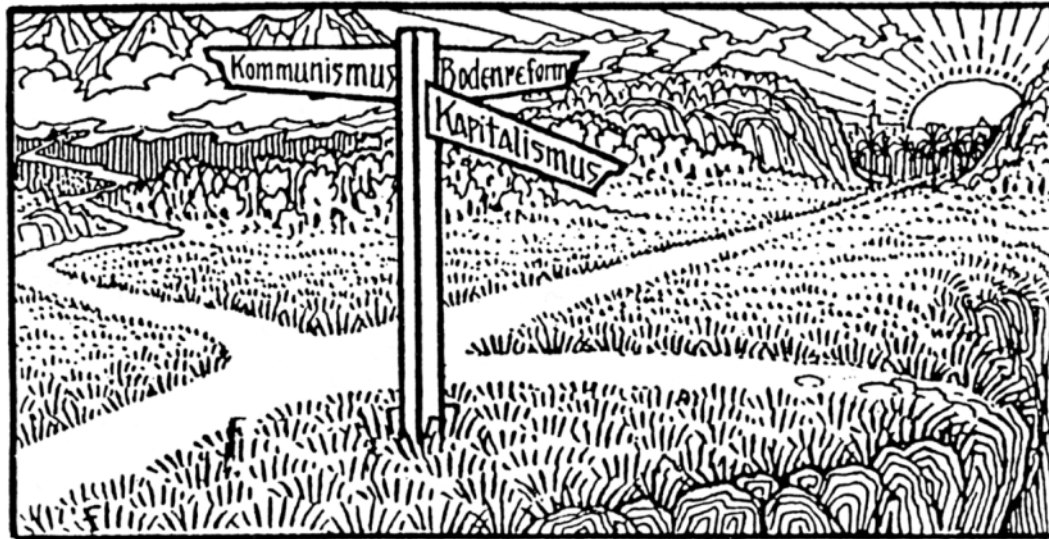
Mögen wir allzeit des Spruches eingedenk sein:

Vereinte Kraft leicht Großes schafft.



In Search of the „Third Way“

Between State and Market, Rental and Co-Ownership



Berlin: „Capital“ of Housing Cooperatives

Regional context and political background

Empire (1871-1918)



Weimar Republic (1919-1933)

National Socialism (1933-1945)



West and East-Berlin (1945-1989)

German Reunification (since 1990)



Empire

Housing Misery and Speculation

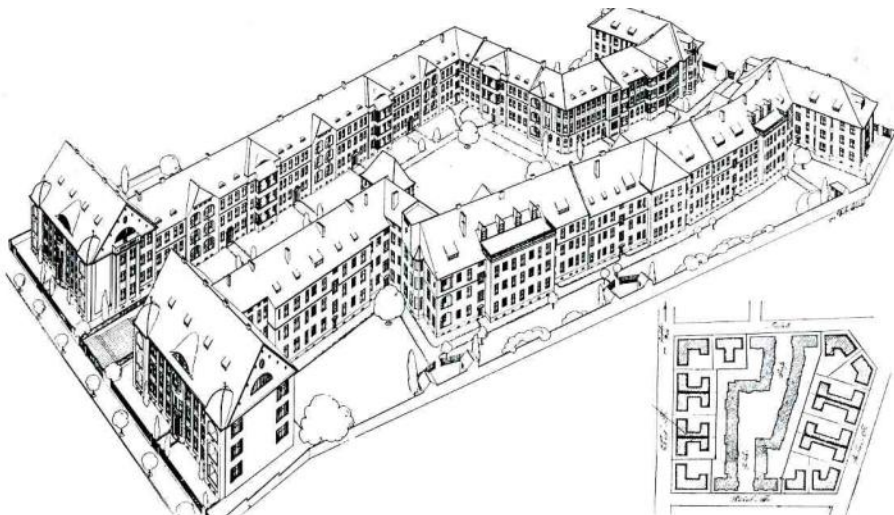
Visions of social, cultural and economic alternatives



Empire

Democracy as a builder

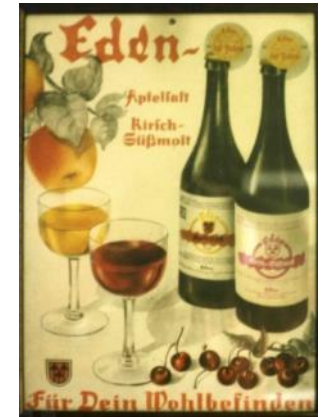
„Reform islands in the stony ocean“ of Berlin



Empire

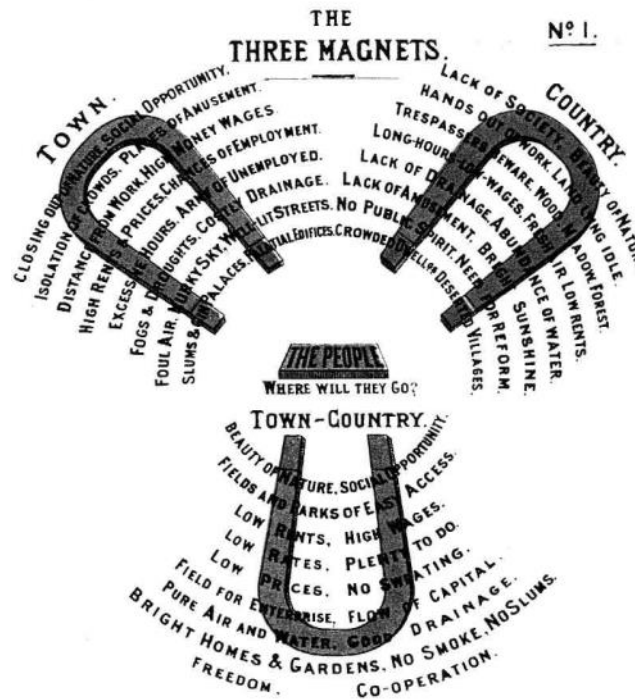
More than a Roof over your Head

Different Living in cooperative communities



The Garden-City movement

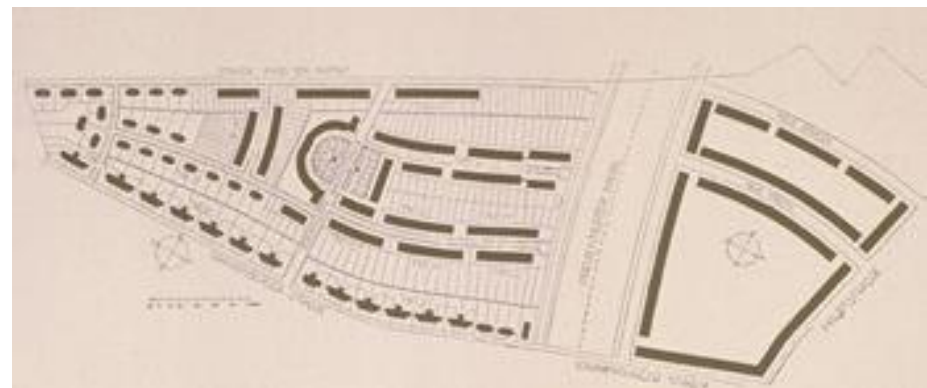
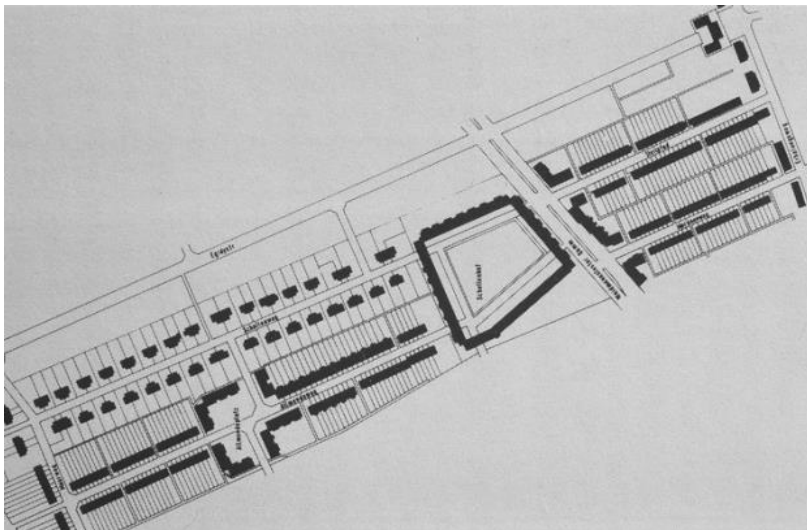
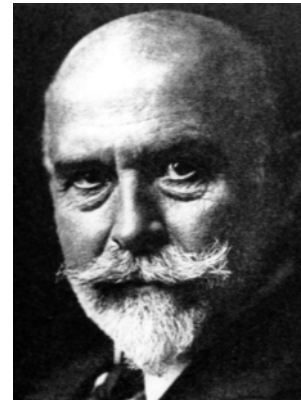
Synthesis of urban living and country-side



Weimar Republic

New urban development

Diversity of architectural solutions



Weimar Republic

Modern Housing Estates

New dimensions and style



Renate Amann, Genossenschaftsforum

Weimar Republic

Social and cultural aims

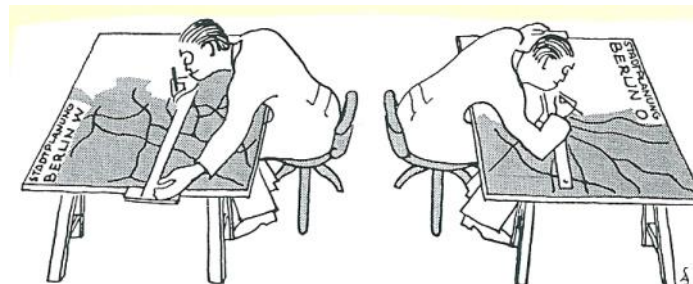
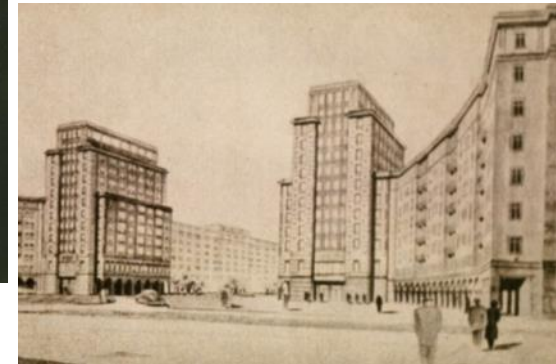
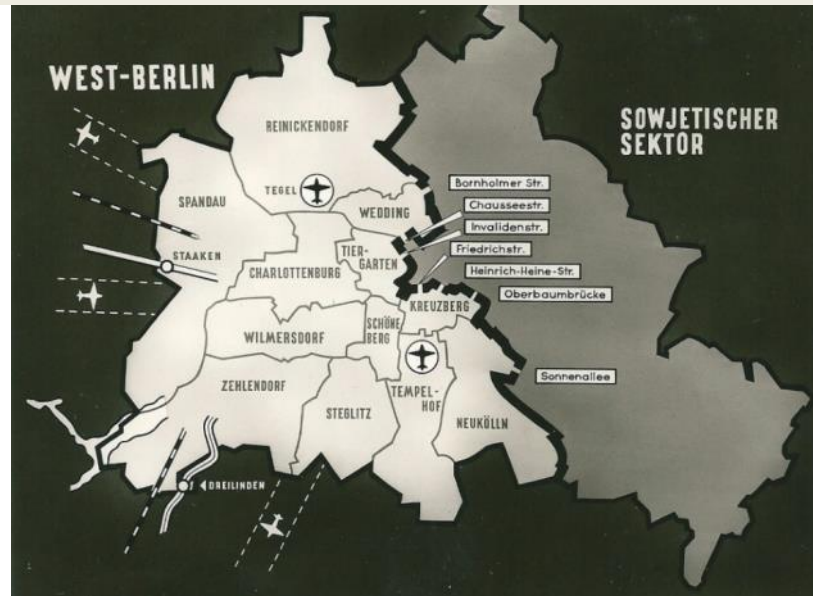
Community living in the 1920ies



Divided City

Different interpretations

Berlin-West versus Berlin-East



Divided City

Berlin East – Capital of GDR

Working Class Housing Cooperatives



Divided City

Building Berlin East

Industrialisation and Pre-Fabrication



Divided City

Berlin-West

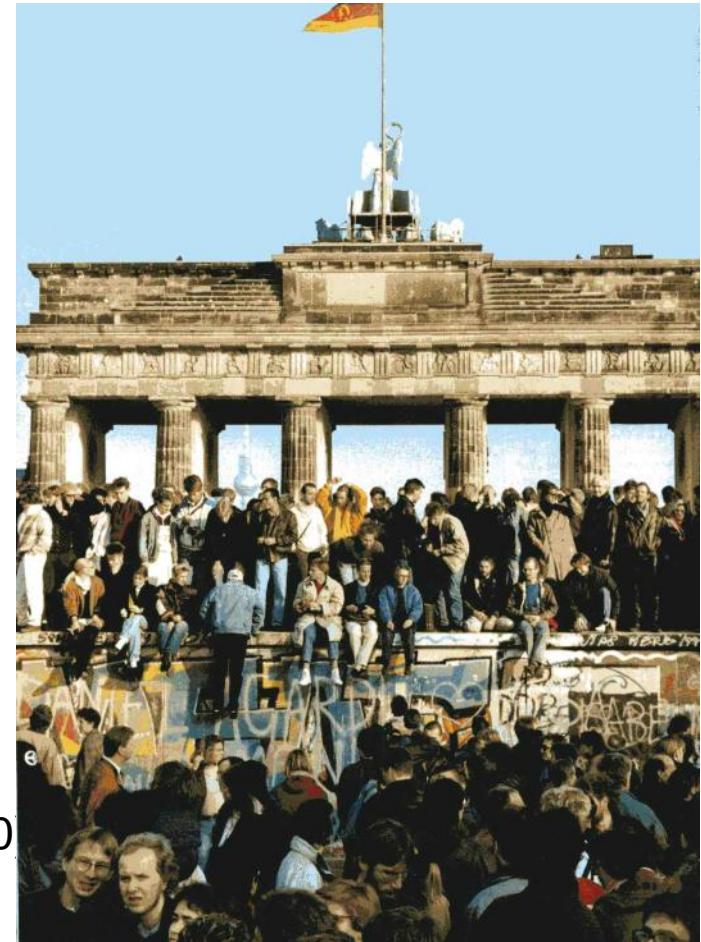
Social Housing Programs



Berlin – Centre of Cooperative Movement

A mirror of European development

- > **Berlin:** 3,5 Mio Inhabitants
1,9 Mio Dwellings (85 % Rental)
- > **90 Housing-Cooperatives**
186.000 Dwellings, Market Share 12 %
- > **Size:** Single House up to 10.000 Dwellings
- **Location/ Type:** Historic Ensemble,
Housing-Estate, Garden-City, New Projects
- > **Spectrum/ Typology:**
 - Traditional Type (after 1886)
 - Former Working-Class-Housing (GDR 1954-1990)
 - New Foundations



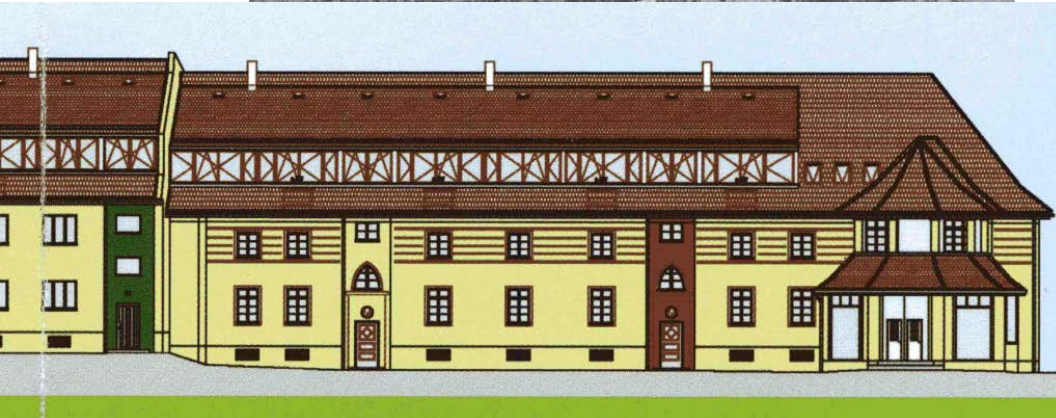
UNESCO World Heritage

Architectural and social commitment



Old Housing ensembles in transition

Traditional – modern: Adaptation to actual demands



Large housing areas with new challenges

Refurbishment, Energy concepts, Social activities



New Ideas for new buildings

From „communicative housing“ to multi-generation projects



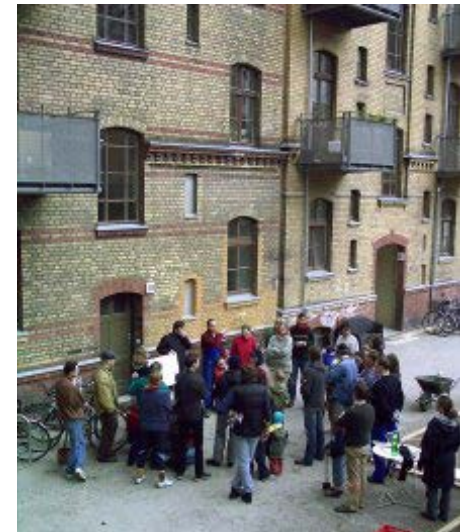
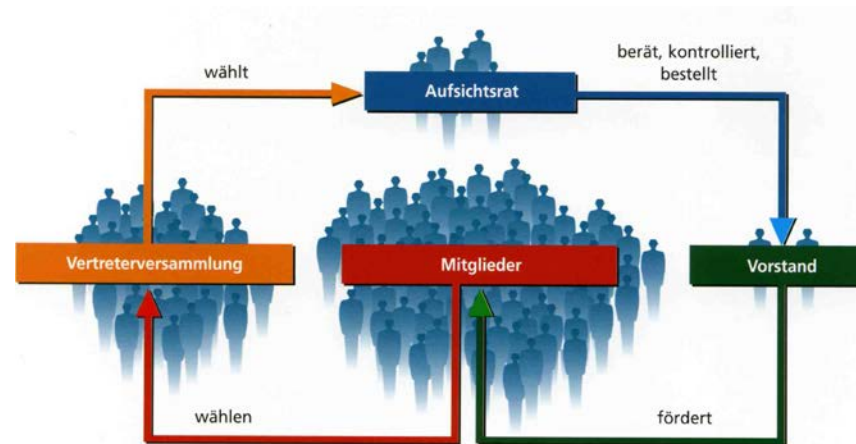
Cooperatives as Actors in urban Quarters

Participation, networks, collaborative strategies



„Living“ Democracy – Principles and Reality

Self-help initiatives, service, co-housing



Member Value - Diversity of Life-Styles

Inclusion of new target groups



Current Concepts and Projects in Berlin

Multi-Generation-Living and new Garden Cities



Young cooperatives in Berlin

New interpretations of an old idea



Potentials, Models, Perspectives

BUILDING, ENERGY EFFICIENCY, ECONOMIC AIMS

- > Sustainable development of housing estates**
- > Affordable rents, member value, re-investment in the housing-stock**
- > Innovative architecture adapted to demographic change**

SOCIAL AND CULTURAL IDEALS

- > Stable neighborhoods, encouragement of self-help**
- > Social, gender and cultural inclusion, cluster and co-housing**
- > Adaptations for elderly people and multi-generation-living**

NEW ROLE IN URBAN QUARTERS

- > Strengthening of networks and participation**
- > Partnership with local institutions and authorities**

***All Reality
is the Utopia of
Yesterday“.***

Franz Oppenheimer (1864-1934)