

## Presentation

### Goals:

- Fight speculation in the housing market,
- Lead training and coordination of its members ,
- Obtain recognition of the social utility and the general interest of housing cooperatives,
- Respond to the needs of housing cooperatives candidate associations, in collaboration with affiliated regional structures,
- Assist in the development of regional structures,
- Centralise information in order to facilitate the creation and success of new projects in association with the affiliated regional structures,
- Represent housing cooperatives vis à vis the State, negotiate and sign agreements with any organisations which assists in achieving our goals,
- Consult the cooperative movement and partners in participatory housing both nationally and internationally,
- Undertake studies and activities aimed at the financial and technical development of housing cooperatives,
- Act to prevent financial and economic difficulties for our members; Study solutions to eliminate abnormal situations and participate in their use,
- Create and administer tools and financial instruments which contribute to the security and the development of our members.
- The federation is composed of the recently created citizen-led housing cooperatives, the associations in the process of creating a housing cooperative, the regional structures which accompany these initiatives and a few individuals.
- The regional structures are members of the Federation and undertake tasks for the Federation both in their territory and nationally.
- Existing and future cooperatives join both the Federation and the regional structure of their territory.

### Composition and governance:

The Federation is administered by a Board composed of a maximum of 30 members divided into colleges:

- Housing cooperatives : 18 members (1 per region)
- Future housing cooperatives : 4 members
- Regional structures : maximum 4 professionals
- Institutional partners : 2 members
- Individuals : 2 members

The Board elects an Executive committee of 3 to 8 members from its ranks.

For more information :

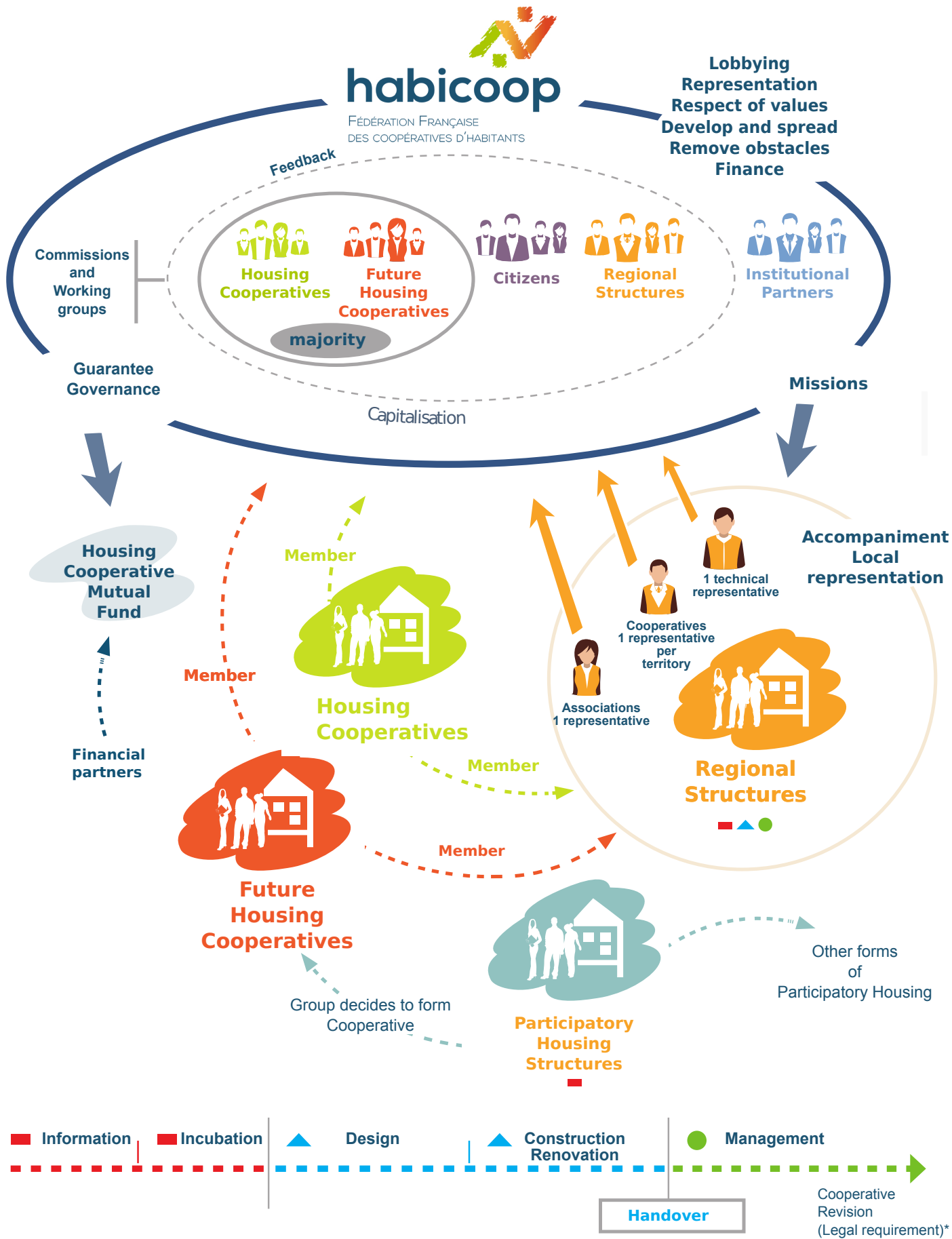
info@habicoop.fr  
or  
www.habicoop.fr



**Habicoop**

c/o Locaux Motiv  
10 bis rue Jangot  
69007 Lyon  
0033 9 72 29 36 77

# From citizens to housing cooperatives: accompaniment as part of popular education



\*Loi du 31 juillet 2014 (n°2014-856)

# French Federation of (citizen led) Housing Cooperatives

## Participants

### Regional Structures

These structures develop housing cooperatives in their territory and professionally accompany them both in the creation and future management of the cooperative including preparing for cooperative revision. They are members of the Federation and undertake missions for the Federation in their territory. Housing cooperatives in their territory join both the regional structure and the Federation. In this way the regional structures undertake accompaniment in all these project phases:

- Fact-finding and incubation
- Design and building
- On-going life of the cooperative

The governance of these structures includes a college of the housing cooperatives in their territory. This college elects 2 members who represent the structure in the General Assembly of the Federation and designate their board member and substitute. They also have a college for future cooperatives. This citizen-based governance ensures that the Federation remains anchored in the territories and provides essential feedback from the terrain.

### Participatory housing structures

They promote participatory housing and in their territory assist individuals and groups in fact-finding and project incubation.

### Housing Cooperatives

They offer an alternative to rental or purchase which avoids speculation: each household, by buying shares and paying a monthly fee based on its income, has the right of use of its private living space and common areas such as meeting room, visitors' bedrooms, laundry, workshop, garden, etc

### Future Housing Cooperatives

They aim to create one or more housing cooperatives and are members of both their regional structure and the Federation.

### Institutional partners

These partners are involved in social housing or the social economy either in France or internationally.

### The Federation is a member of

French cooperative apex body

Coordin'action – which groups 14 associations involved in participatory housing

RAHP - network of accompaniment professionals

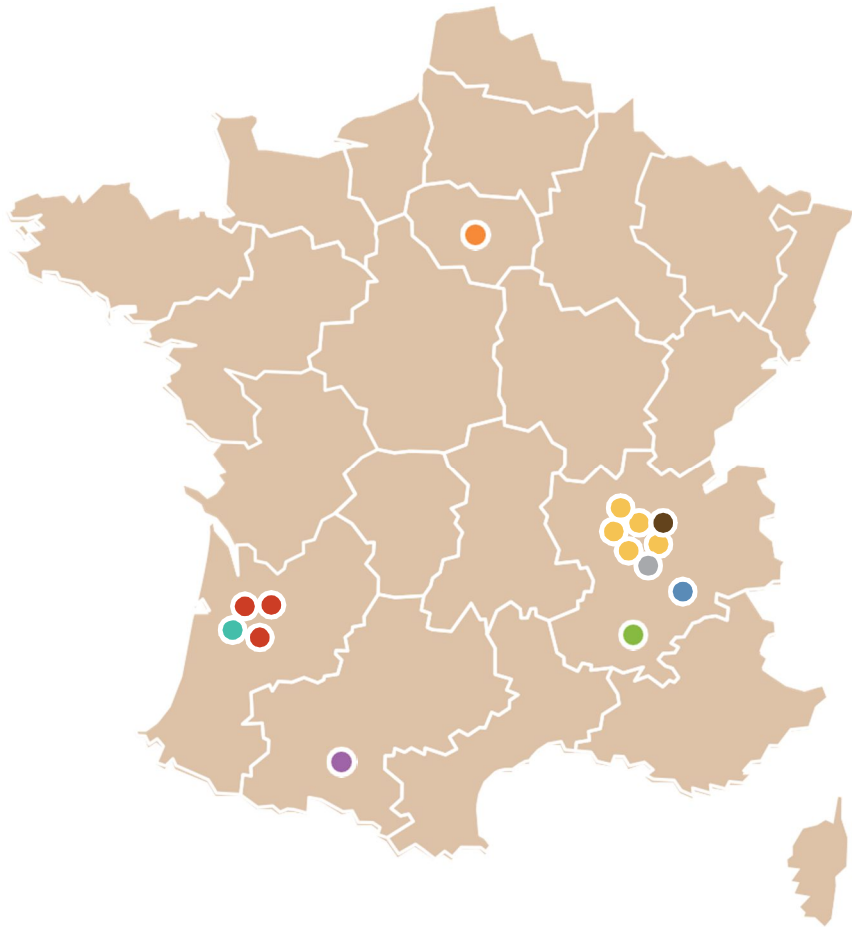
CLT France - Community Land Trust France

FNSCHLM - French Federation of Cooperative Social Housing

### Charter

**Project groups, and the individuals of which they are composed, who wish to create housing cooperatives and join the movement in order to benefit from our support, share the following values:**

- Housing cooperatives offer an alternative collective form of ownership which is dissociated from the right to use
- Housing as a function and collective interest are more important than investment and profit
- Housing cooperatives refuse speculation
- Housing cooperatives imply sharing space and services which favorise solidarity, exchange and reduce resource consumption
- The project involves the future residents from the conception phase where possible
- In the spirit of cooperation, every resident takes responsibility within a system of collective management
- Decisions are taken democratically with the principle of one person = one vote however many shares they may hold
- The cooperative limits its ecological footprint by architectural and technical choices and in day to day management
- The cooperative is inclusive: in particular financial difficulties of a project member should not be a limiting factor. The cooperative refuses discrimination.
- The cooperative is open to its neighbourhood and surroundings
- Adopted by the general assembly 27 October 2007



● **HABICOOP – French Federation of Housing Cooperatives** - Lyon, 69000

**Regional Structures**

- **HABICOOP AURA** - Lyon, 69000
- **AtCooP** - Bordeaux, 33000

**Accompanied projects**

- **CHAMAREL « Les Barges »** - Vaulx en velin, 69120
- **La Gargousse** - Guillotière, 69007
- **Village Vertical** - Villeurbanne, 69100
- **project incubator city of Lyon** - 69000
- **project incubator city of Paris** - 75000
- **boboYAKA** - Bègles, 33130
- **H'noRD** - Bordeaux, 33000
- **L'SuD** - Bordeaux, 33000
- **La Bergerie** - Valence, 26000
- **Graine de Bitume** - Grenoble, 38000
- **AbRiCooP** - Toulouse, 31000

propriété collective  
 sécurisation avec la révision coopérative  
**mixité et équité**  
vie ultérieure de la coopérative soutien de la Fédération nationale  
 mutualisation  
**démocratie**  
 écologie  
 innovation sociale  
 choix des matériaux  
 économies d'énergie  
 coûts liés aux usages  
**économie sociale et solidaire**  
 intelligence collective citoyenne  
 accès à tous  
**non spéculation**  
 responsabilisation  
 autonomisation  
 accompagnement professionnel  
 formations  
 intergénérationnel  
 intérêt général

